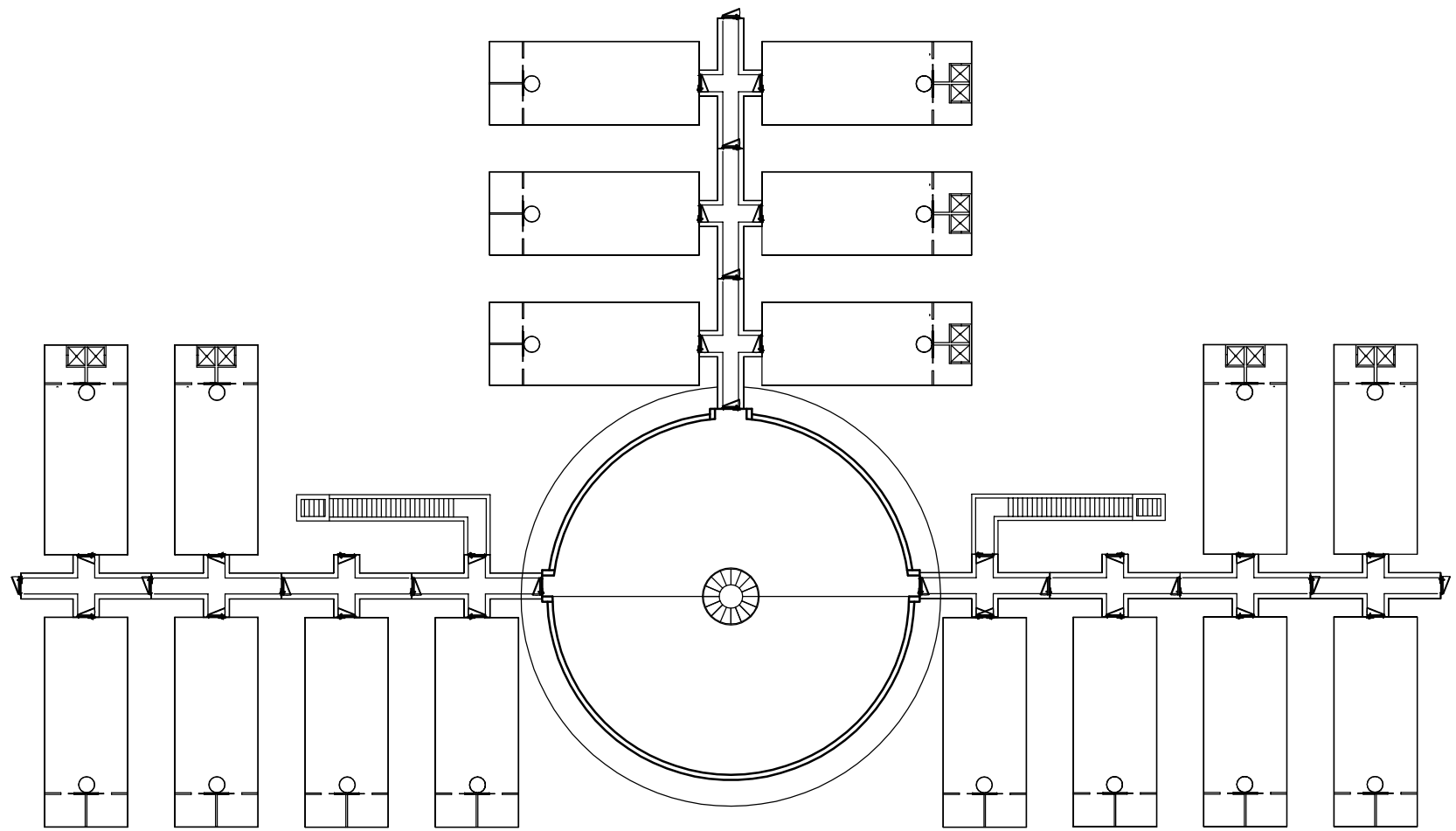


DOME: 1/16" = 1'-0"



DOME
CONFIGURATION
1/32" = 1'-0"



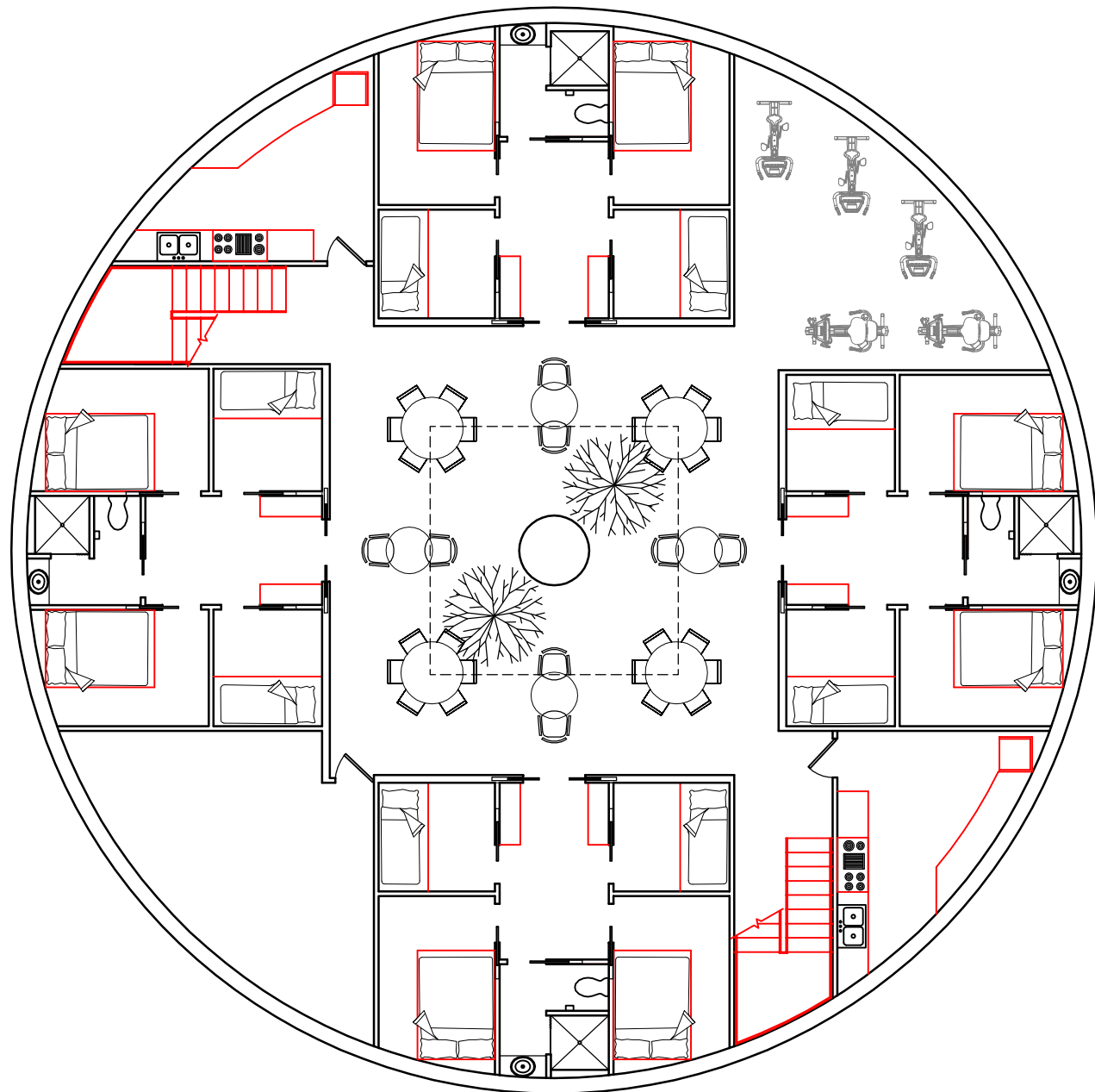
HARDENED STRUCTURES LLC - DOME 10: CONCEPTUAL DIAGRAMS AND LAYOUTS

VIRGINIA BEACH, VIRGINIA

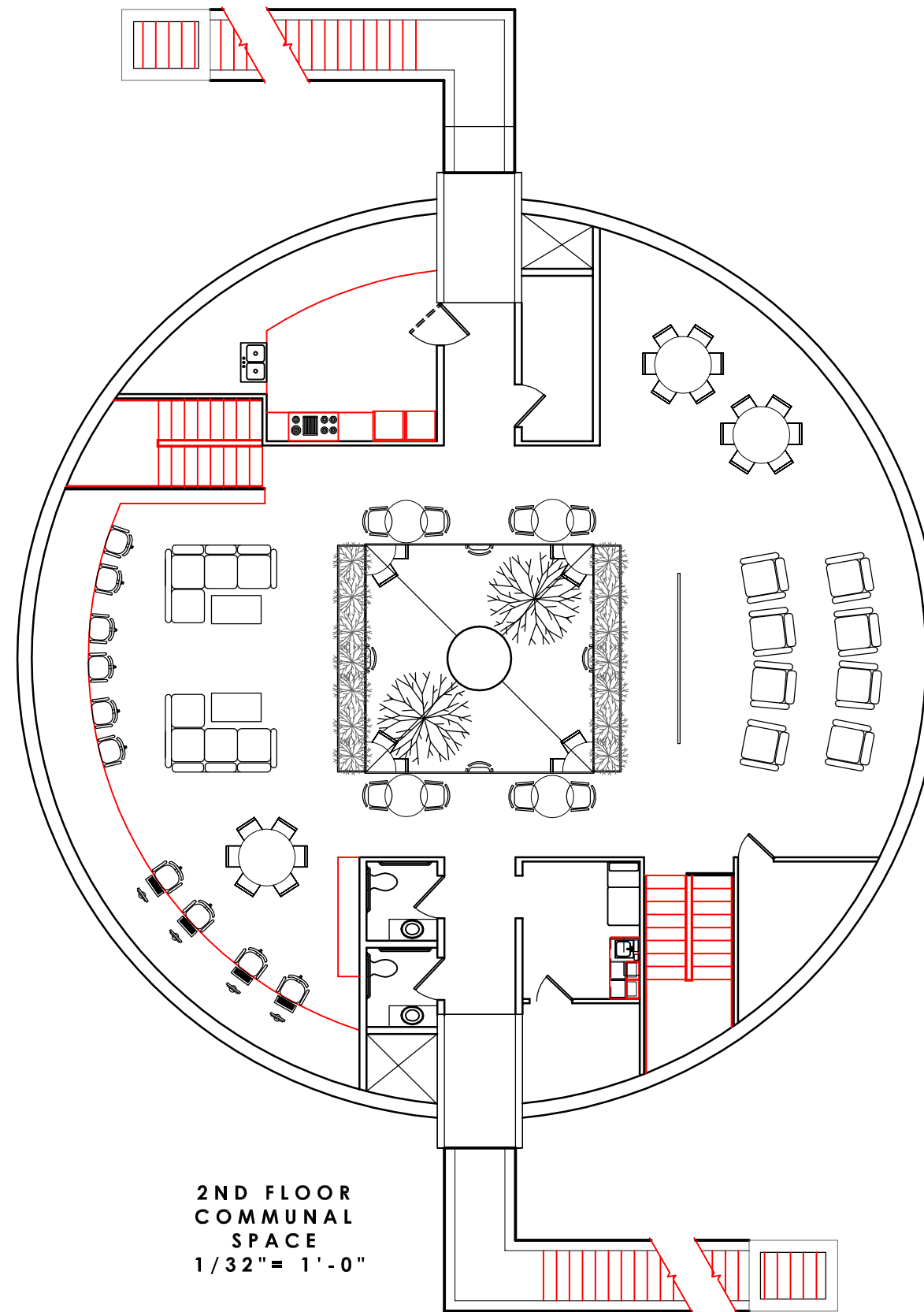
AUG. 31, 2010

PAGE ONE

THIS DOCUMENT IS THE SOLE PROPERTY OF HARDENED STRUCTURES HARDENED SHELTERS LLC, A PROFESSIONAL CORPORATION, VIRGINIA BEACH VIRGINIA. THE USE OF THIS DOCUMENT AND/OR DESIGN IN WHOLE OR IN PART IS STRICTLY PROHIBITED WITHOUT EXPRESS WRITTEN CONSENT, COPYRIGHT 2010.



1ST FLOOR
LIVING SPACE
1/32" = 1'-0"
MAX PEOPLE: 32



2ND FLOOR
COMMUNAL
SPACE
1/32" = 1'-0"

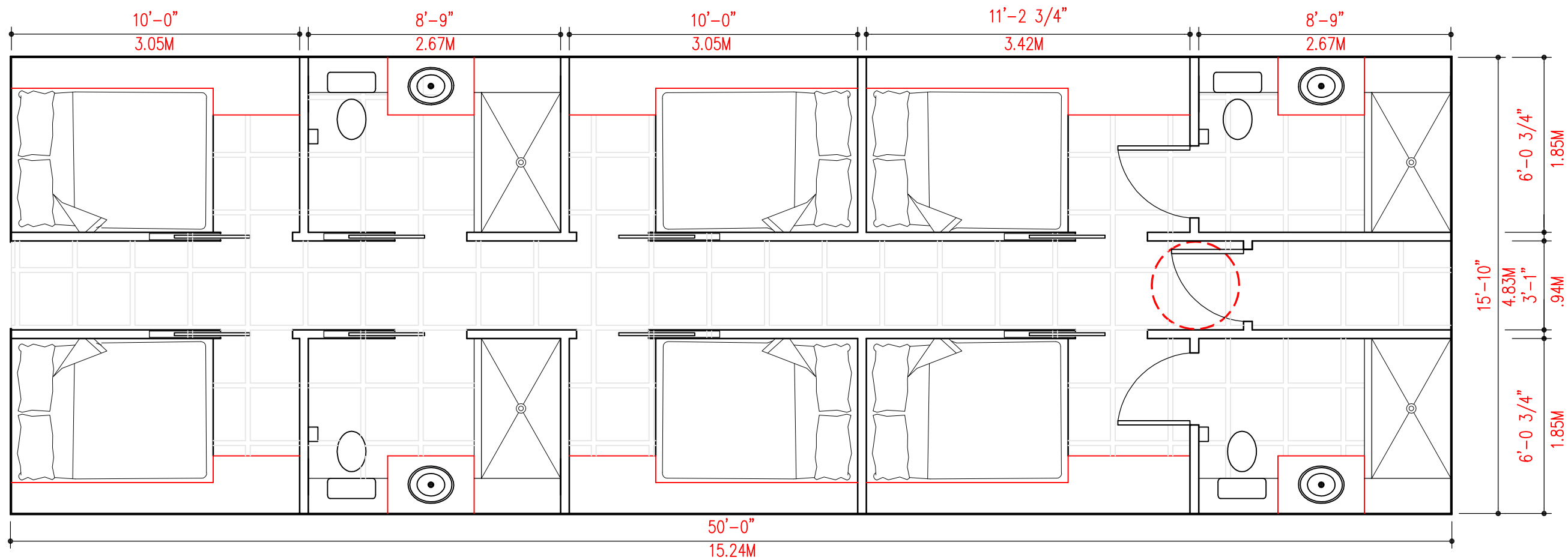


HARDENED STRUCTURES LLC - DOME 10: CONCEPTUAL STAND ALONE DOME

VIRGINIA BEACH, VIRGINIA

SEP. 17, 2010

PAGE ONE



HARDENED STRUCTURES LLC - GENESIS 50' LAYOUT

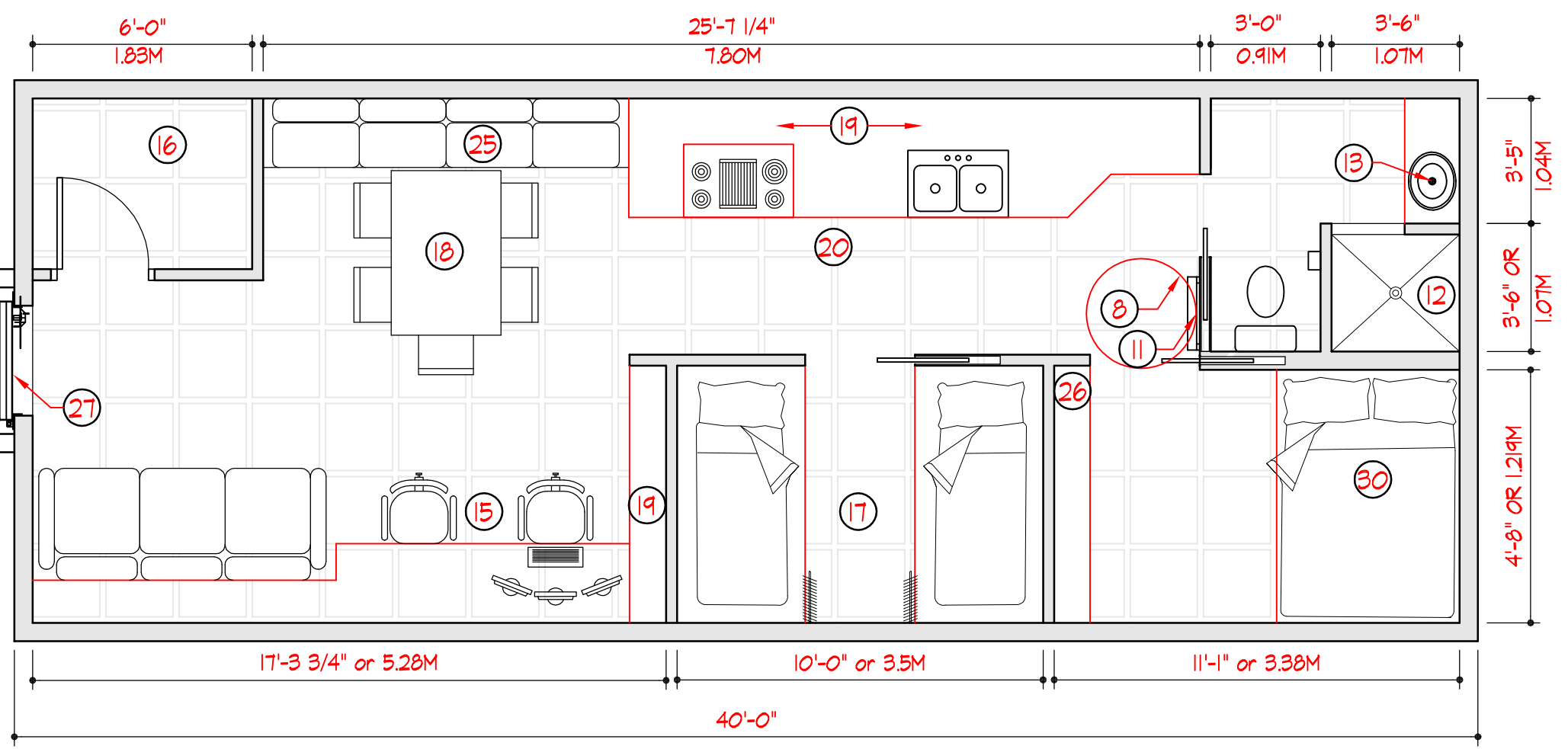
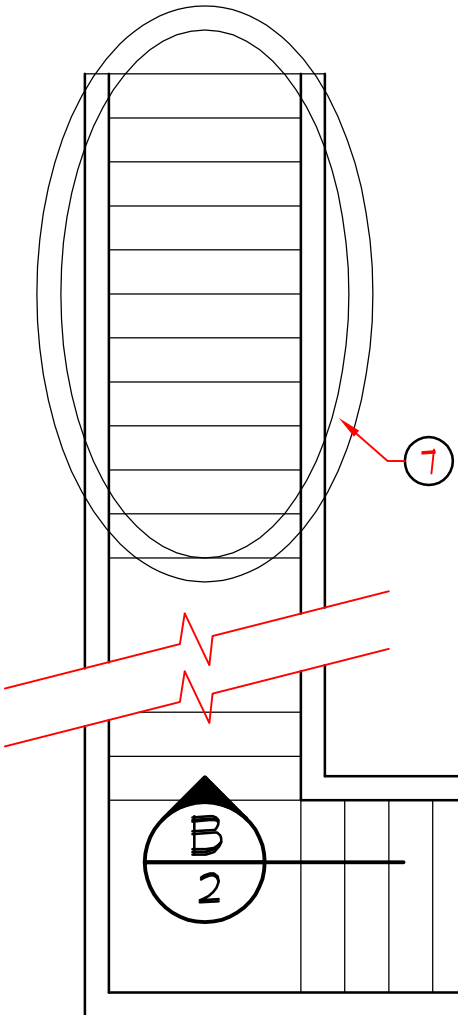
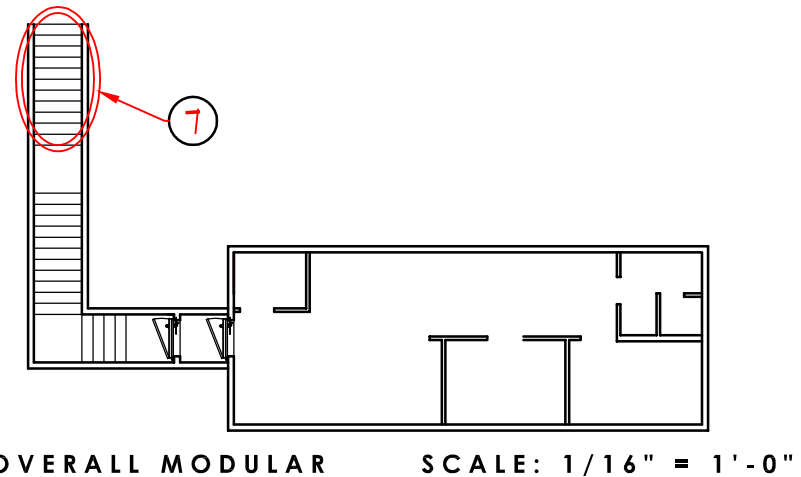
VIRGINIA BEACH, VIRGINIA

SEP. 2, 2010

SCALE 1/4" = 1'-0"

PAGE 1

KEY:			
1	WATER TANK	9	DECONTAMINATION AREA
2	FOOD / STORAGE SPACE	10	BLAST HATCH-WITH ROCK LIKE CAMOUFLAGE
3	FLOOR STRUCTURE	11	INTERIOR LADDER TO ESCAPE HATCH
4	FLOOR MATERIAL	12	SHOWER
5	FINISH FLOOR MATERIAL	13	DOUBLE SINK COUNTER WITH/ CABINET SPACE ABOVE AND BELOW
6	STEEL STRUCTURE	14	VERTICAL MIRROR
7	SECURE ENTRANCE WITH AIR LOCK AND HYDRAULIC HATCH	15	COMMUNICATION AREA
8	ESCAPE TUNNEL WITH BLAST HATCH	16	MECH/ ELEC. ROOM ALSO INCLUDING: SEPTIC SYSTEM AND AIR FILTRATION
		17	BUNK BEDS WITH STORAGE ABOVE
		18	DINNING ROOM TABLE
		19	CUSTOM CABINETS
		20	KITCHEN AREA
		21	FREEZER STORAGE
		22	ENTERTAINMENT AREA
		23	CUSTOM SHELVING
		24	CAVITY FOR WIRING
		25	CUSTOM CUSHION SEATING
		26	DRESSER
		27	4 BLAST DOORS
		28	CONNECTING CORRIDOR WITH POCKET DOORS
		29	DOUBLE WALL OVEN/ MICROWAVE
		30	EXECUTIVE BEDROOM



HARDENED STRUCTURES LLC - 6 PERSON MODULAR LIVING UNIT (EXECUTIVE OPTION)

VIRGINIA BEACH, VIRGINIA

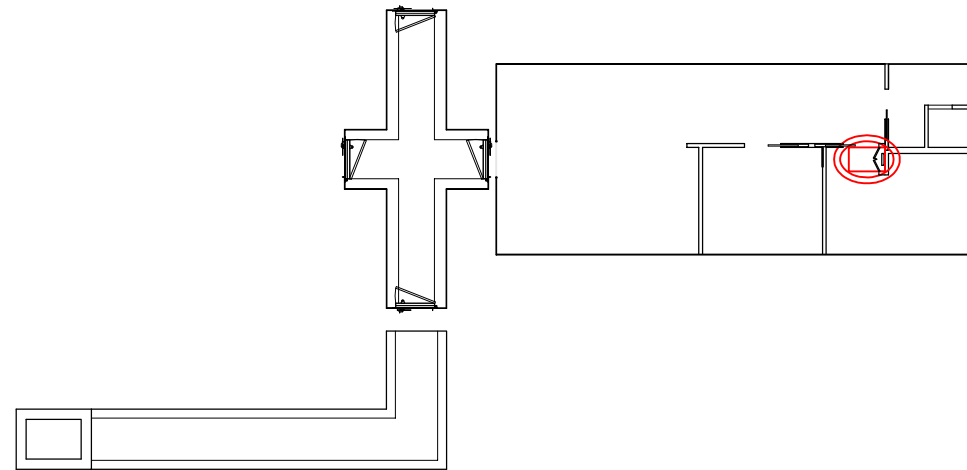
JUNE 08, 2010

SCALE 1/4" = 1'-0"

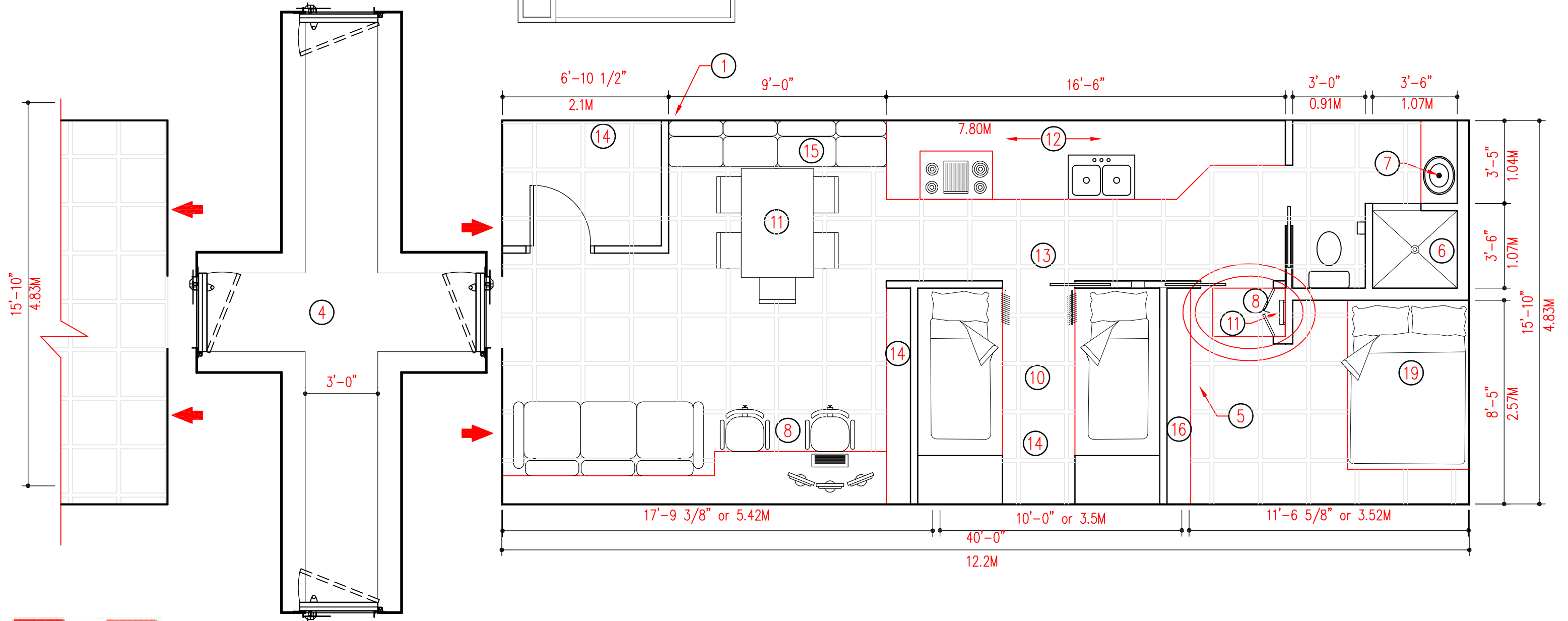
PAGE ONE

THIS DOCUMENT IS THE SOLE PROPERTY OF HARDENED STRUCTURES HARDENED SHELTERS LLC, A PROFESSIONAL CORPORATION, VIRGINIA BEACH VIRGINIA. THE USE OF THIS DOCUMENT AND/OR DESIGN IN WHOLE OR IN PART IS STRICTLY PROHIBITED WITHOUT EXPRESS WRITTEN CONSENT, COPYRIGHT 2010.

OVERALL MODULAR SCALE: 1/16" = 1'-0"



KEY FOR GENESIS EXECUTIVE PLANS:			
①	A-36 -3/8" MIN. THICKNESS STEEL STRUCTURE	⑥	SHOWER
②	SECURE ENTRANCE WITH AIR LOCK AND HYDRAULIC HATCH	⑦	SINK COUNTER WITH/ CABINET SPACE BELOW.
③	ESCAPE TUNNEL WITH FLEXIBLE SHEAR CONNECTION INCLUDING BLACK CORRUGATED SCH 40 UPVC DRAINAGE CULVERT SECTION TO DRAIN WATER FROM EEM	⑧	COMMUNICATION AREA CUSTOM TO CLIENTS WISHES
④	DECONTAMINATION AREA WITH WATER RINSE OPTIONS AND DRAINS	⑨	MECH/ ELEC. ROOM INCLUDING BATTERY AND AIR FILTRATION.
⑤	INTERIOR LADDER TO ESCAPE HATCH	⑩	BUNK BEDS
		⑪	DINNING ROOM TABLE
		⑫	CUSTOM CABINETS
		⑬	KITCHEN AREA
		⑭	CUSTOM SHELVING
		⑮	CUSTOM CUSHION SEATING
		⑯	DRESSER
		⑰	4' BLAST DOORS
		⑱	CONNECTING CORRIDOR WITH POCKET DOORS
		⑲	EXECUTIVE BEDROOM
		⑳	DOUBLE OVEN



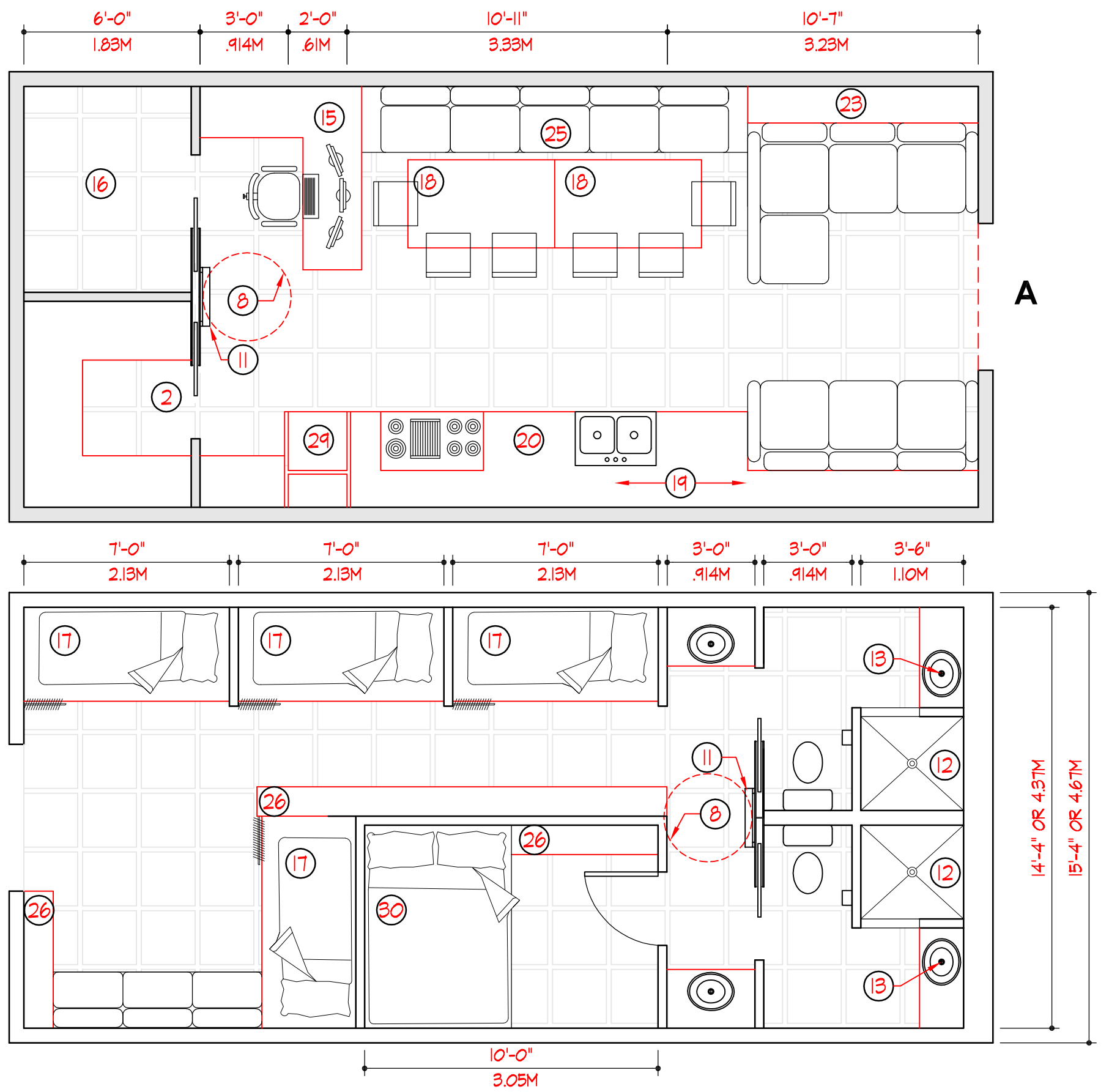
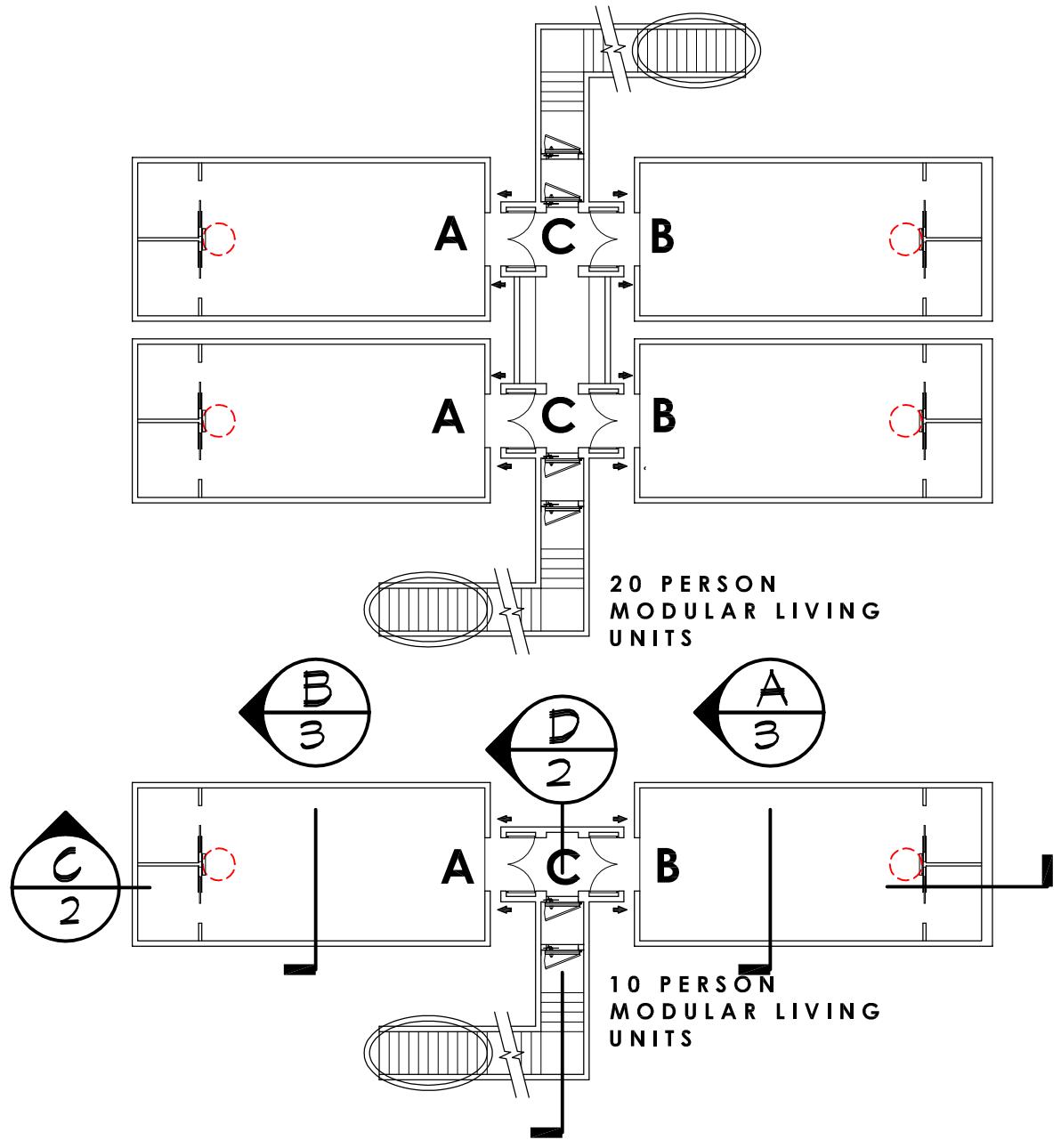
HARDENED STRUCTURES LLC - GENESIS 6: EXECUTIVE OPTION 2

VIRGINIA BEACH, VIRGINIA

AUGUST 13, 2010

SCALE 1/4" = 1'-0"

KEY:							
①	WATER TANK	④	DECONTAMINATION AREA	⑬	MECH./ELEC. ROOM ALSO INCLUDING SEPTIC SYSTEM AND AIR FILTRATION.	⑳	CUSTOM CUSHION SEATING
②	FOOD / STORAGE SPACE	⑩	BLAST HATCH - WITH ROCK LIKE CAMOUFLAGE	⑭	BUNK BEDS WITH STORAGE ABOVE	㉑	DRESSER
③	FLOOR STRUCTURE	⑪	INTERIOR LADDER TO ESCAPE HATCH	⑮	DINNING ROOM TABLE	㉒	4' BLAST DOORS
④	FLOOR MATERIAL	⑫	SHOWER	⑯	CUSTOM CABINETS	㉓	CONNECTING CORRIDOR WITH POCKET DOORS
⑤	FINISH FLOOR MATERIAL	⑬	DOUBLE SINK COUNTER WITH CABINET SPACE ABOVE AND BELOW.	⑰	KITCHEN AREA	㉔	DOUBLE WALL OVEN/ MICROWAVE
⑥	STEEL STRUCTURE	⑭	VERTICAL MIRROR	⑱	FREEZER STORAGE	㉕	EXECUTIVE BEDROOM
⑦	SECURE ENTRANCE WITH AIR LOCK AND HYDRAULIC HATCH	⑮	COMMUNICATION AREA	㉖	ENTERTAINMENT AREA		
⑧	ESCAPE TUNNEL WITH BLAST HATCH			㉗	CUSTOM SHELVING		



HARDENED STRUCTURES LLC - 10 MODULAR LIVING UNIT (EXECUTIVE OPTION)

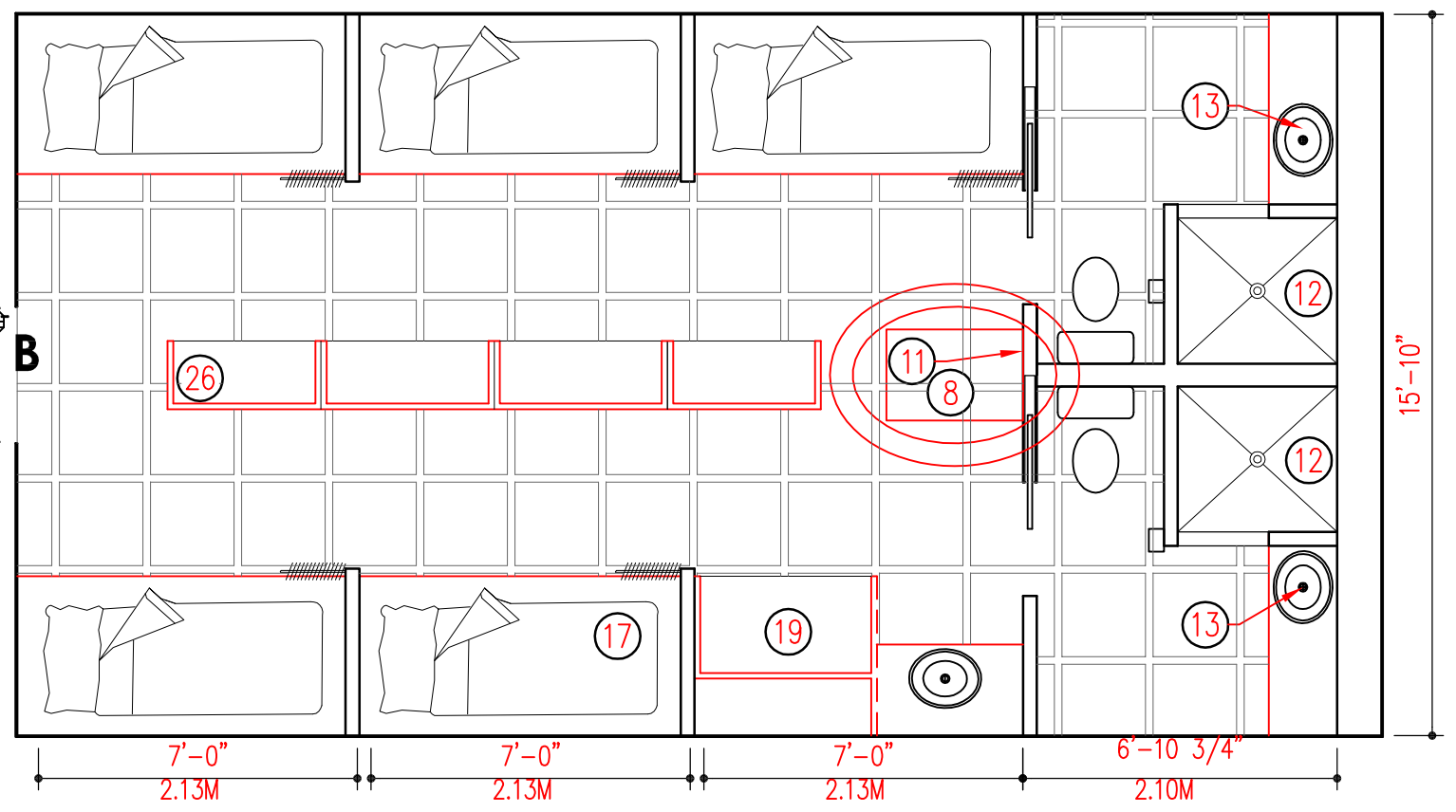
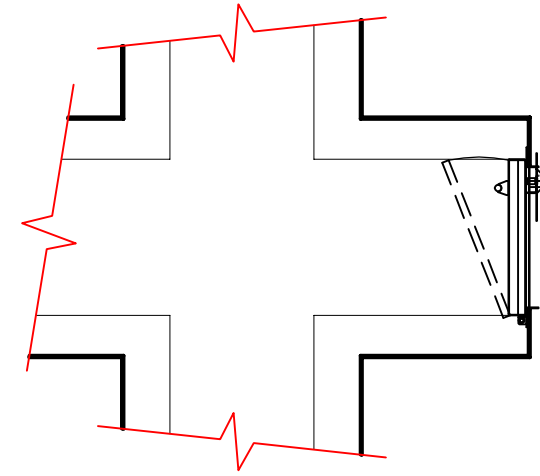
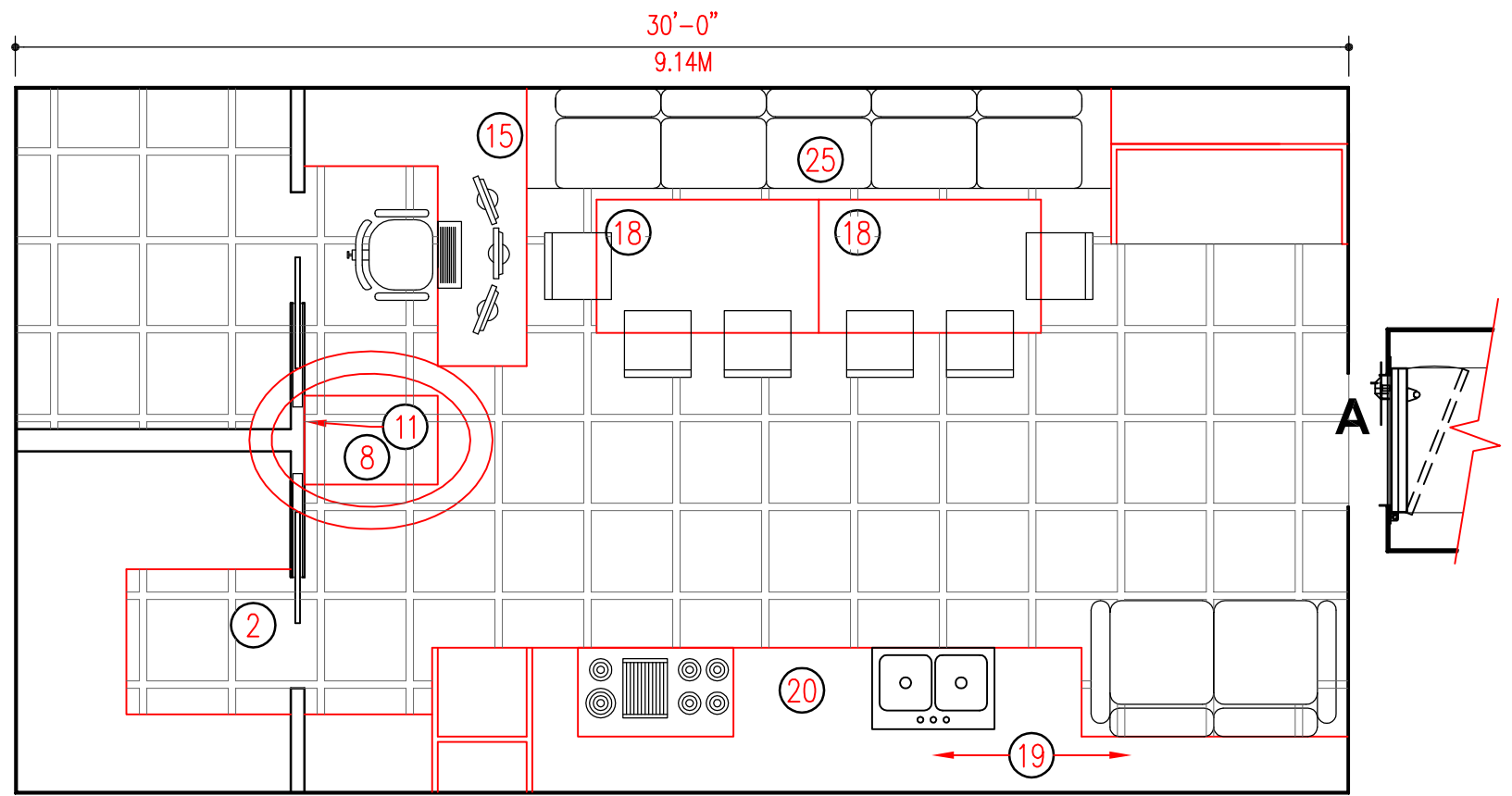
VIRGINIA BEACH, VIRGINIA

JUNE 08, 2010

PAGE ONE

THIS DOCUMENT IS THE SOLE PROPERTY OF HARDENED STRUCTURES HARDENED SHELTERS LLC, A PROFESSIONAL CORPORATION, VIRGINIA BEACH VIRGINIA. THE USE OF THIS DOCUMENT AND/OR DESIGN IN WHOLE OR IN PART IS STRICTLY PROHIBITED WITHOUT EXPRESS WRITTEN CONSENT. COPYRIGHT 2010.

KEY:			
①	WATER TANK- 200 GAL. DIA. ELECTRIC PLASTIC TANKS (www.plastic-mart.com)	⑧	ESCAPE TUNNEL WITH FLEXIBLE SHEAR CONNECTION; INCLUDING BLACK CORRUGATED SCH 40 UPVC DRAINAGE CULVERT SECTION TO DRAIN WATER FROM EEM
②	2' x 2' TATE ACCESS FLOOR TO ACCESS FOOD STORES AND EQUIPMENT (http://www.tateaccessfloors.com/)	⑨	DECONTAMINATION AREA WITH WATER RINSE OPTIONS AND DRAINS
③	FLOOR LEVEL	⑩	MARINE TYPE BLAST HATCH @ TOP AND BOTTOM. TOP HATCH CAMOUFLAGED AS A ROCK
④	INSULATED GALVANIZED DUCT 12" X 20"	⑪	INTERIOR LADDER TO ESCAPE HATCH
⑤	DIA. ELECTRICAL POLY PIPES 1 1/2" DIA SHOCK RESISTANT MOUNTINGS AND CHAFFING COLLARS AT PASS THROUGH	⑫	SHOWER- ALL HOT WATER TO BE SUPPLIED ON DEMAND - WATER HEATERS BY EITHER RHOEM, BOSH, BERETTA
⑥	A-36 -3/8" MIN. THICKNESS STEEL STRUCTURE	⑬	SINK COUNTER WITH/ CABINET SPACE BELOW
⑦	MECHANICAL LATCHES TO SERVE AS BACKUP TO HYDRAULICS HATCH	⑭	PECKS PIPE "COLOR CODED" 1 1/2" SUPPLY 1" TO HEATERS 3/4" TO SHOWER 1/2" PLUMBING PIPES
		⑮	COMMUNICATION AREA CUSTOM TO CLIENTS WISHES
		⑯	INTERIOR MECH/ ELEC. ROOM INCLUDING BATTERY AND AIR FILTRATION.
		⑰	BUNK BEDS WITH STORAGE ABOVE
		⑱	DINNING ROOM TABLE
		⑲	CABINETS WATER RESISTANT MATERIALS ONLY
		⑳	KITCHEN AREA
		㉑	FREEZER STORAGE
		㉒	ENTERTAINMENT AREA
		㉓	FREEZER STORAGE - 12CF MAX
		㉔	ENTERTAINMENT AREA
		㉕	CUSTOM SHELVING
		㉖	CAVITY FOR WIRING
		㉗	CUSTOM CUSHION SEATING
		㉘	3' BLAST DOORS
		㉙	CONNECTION CORRIDOR



HARDENED STRUCTURES LLC - GENESIS 10: STANDARD PLAN

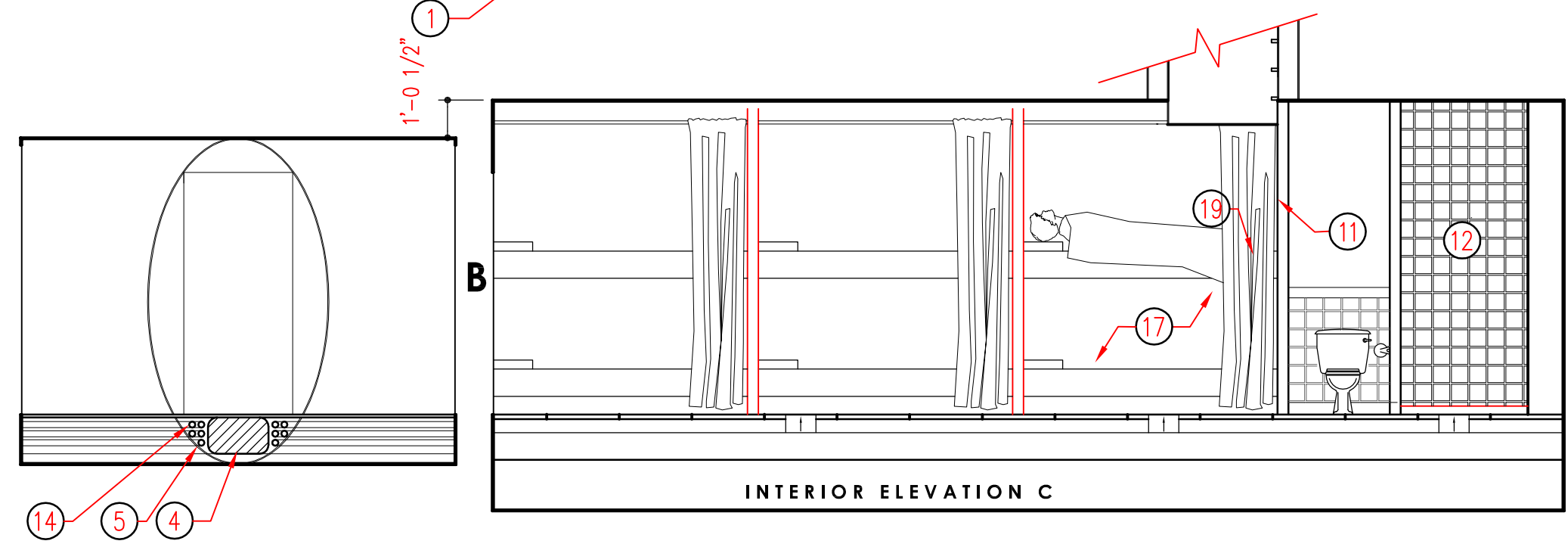
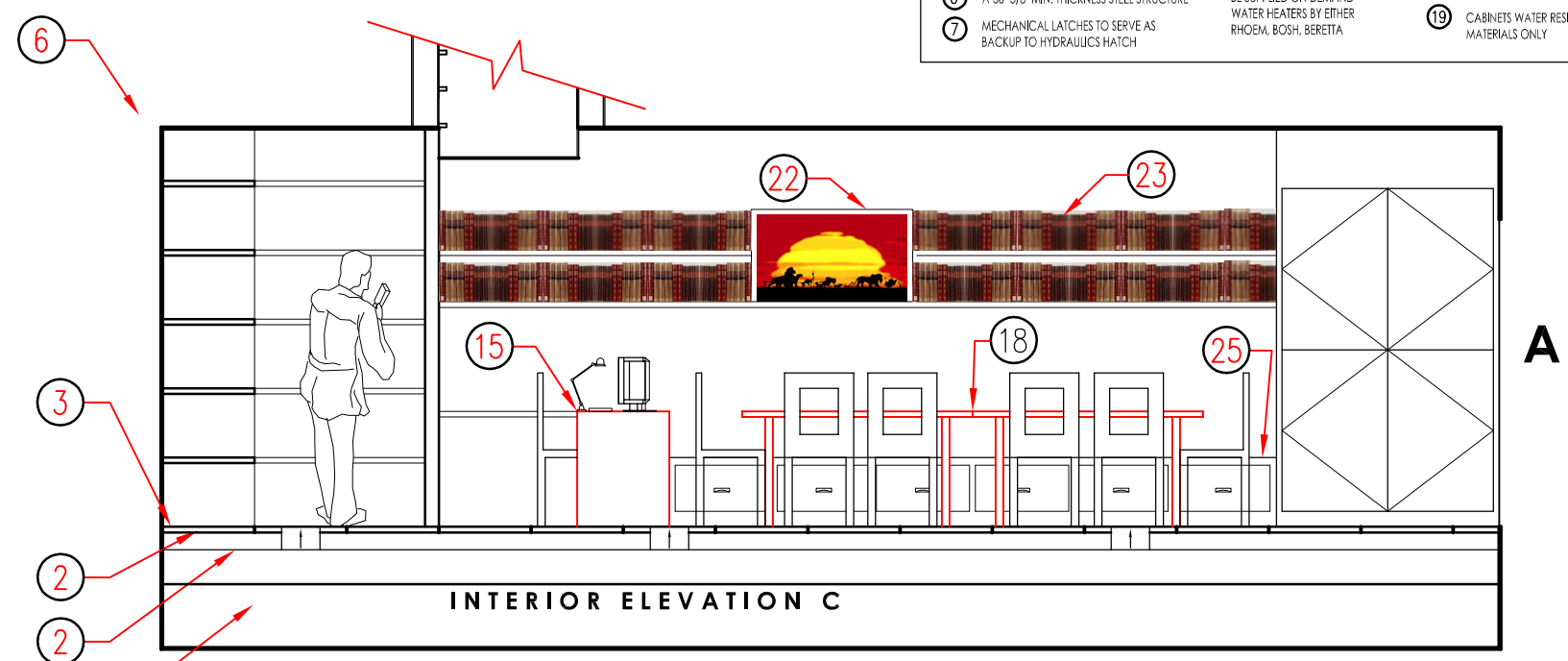
VIRGINIA BEACH, VIRGINIA

AUG. 13, 2010

PAGE ONE

THIS DOCUMENT IS THE SOLE PROPERTY OF HARDENED STRUCTURES HARDENED SHELTERS LLC, A PROFESSIONAL CORPORATION, VIRGINIA BEACH VIRGINIA. THE USE OF THIS DOCUMENT AND/OR DESIGN IN WHOLE OR IN PART IS STRICTLY PROHIBITED WITHOUT EXPRESS WRITTEN CONSENT, COPYRIGHT 2010.

KEY:			
1	WATER TANK- 200 GAL. DIA. ELECTRIC PLASTIC TANKS (www.plastic-mart.com)	8	ESCAPE TUNNEL WITH FLEXIBLE SHEAR CONNECTION, INCLUDING BLACK CORRUGATED SCH 40 UPVC DRAINAGE CULVERT SECTION TO DRAIN WATER FROM EEM
2	2' x 2' TATE ACCESS FLOOR TO ACCESS FOOD STORES AND EQUIPMENT (http://www.tateaccessfloors.com/)	9	DECONTAMINATION AREA WITH WATER RINSE OPTIONS AND DRAINS
3	FLOOR LEVEL	10	MARINE TYPE BLAST HATCH @ TOP AND BOTTOM. TOP HATCH CAMOUFLAGED AS A ROCK
4	INSULATED GALVANIZED DUCT 12' X 20" DIA. ELECTRICAL POLY PIPES 1 1/2" DIA SHOCK RESISTANT MOUNTINGS AND CHAFFING COLLARS AT PASS THROUGH	11	INTERIOR LADDER TO ESCAPE HATCH
5	A-36 -3/8" MIN. THICKNESS STEEL STRUCTURE	12	SHOWER- ALL HOT WATER TO BE SUPPLIED ON DEMAND - WATER HEATERS BY EITHER RHOEM, BOSH, BERETTA
6	MECHANICAL LATCHES TO SERVE AS BACKUP TO HYDRAULICS HATCH	13	SINK COUNTER WITH/ CABINET SPACE BELOW
7		14	PECKS PIPE "COLOR CODED" 1 1/2" SUPPLY 1" TO HEATERS 3/4" TO SHOWER 1/2" PLUMBING PIPES
		15	COMMUNICATION AREA CUSTOM TO CLIENTS WISHES
		16	INTERIOR MECH/ ELEC. ROOM INCLUDING BATTERY AND AIR FILTRATION.
		17	BUNK BEDS WITH STORAGE ABOVE
		18	DINNING ROOM TABLE
		19	CABINETS WATER RESISTANT MATERIALS ONLY
		20	KITCHEN AREA
		21	FREEZER STORAGE
		22	ENTERTAINMENT AREA
		23	FREEZER STORAGE - 12CF MAX
		24	ENTERTAINMENT AREA
		25	CUSTOM SHELVING
		26	CAVITY FOR WIRING
		27	CUSTOM CUSHION SEATING
			3' BLAST DOORS
			CONNECTION CORRIDOR



HARDENED STRUCTURES LLC - GENESIS 10: STANDARD ELEVATION

VIRGINIA BEACH, VIRGINIA

AUG. 13, 2010

SCALE 1/4" = 1'-0"

PAGE TWO

THIS DOCUMENT IS THE SOLE PROPERTY OF HARDENED STRUCTURES HARDENED SHELTERS LLC, A PROFESSIONAL CORPORATION, VIRGINIA BEACH VIRGINIA. THE USE OF THIS DOCUMENT AND/OR DESIGN IN WHOLE OR IN PART IS STRICTLY PROHIBITED WITHOUT EXPRESS WRITTEN CONSENT, COPYRIGHT 2010.