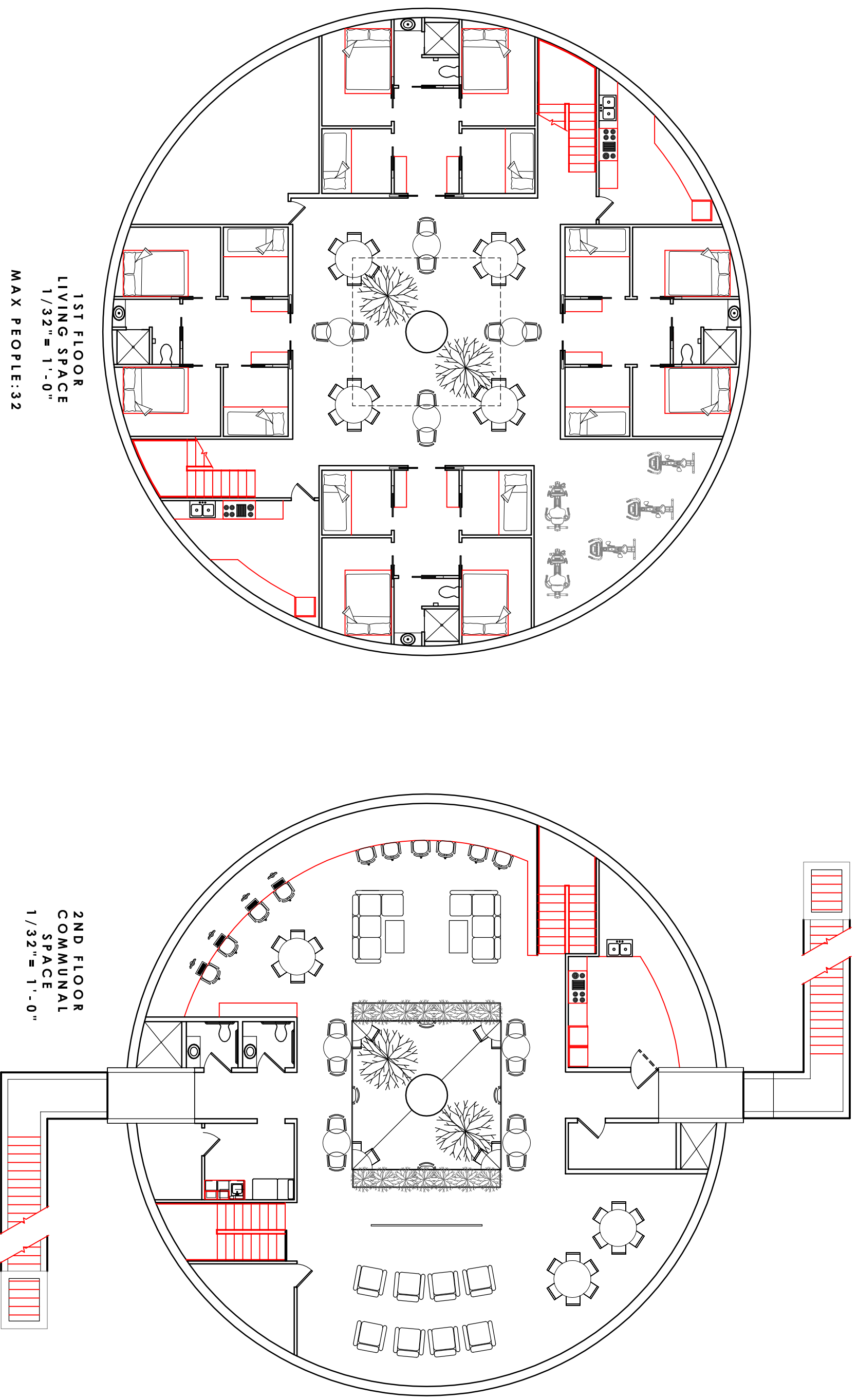


HARDENED STRUCTURES LLC - DOME 10: CONCEPTUAL STAND ALONE DOME
VIRGINIA BEACH, VIRGINIA

THIS DOCUMENT IS THE SOLE PROPERTY OF HARDENED STRUCTURES HARDENED SHELTERS LLC. A PROFESSIONAL CORPORATION, VIRGINIA BEACH VIRGINIA. THE USE OF THIS DOCUMENT AND/OR DESIGN IN WHOLE OR IN PART IS STRICTLY PROHIBITED WITHOUT EXPRESS WRITTEN CONSENT. COPYRIGHT 2010.



1ST FLOOR
LIVING SPACE
1/32" = 1'-0"
MAX PEOPLE:32

2ND FLOOR
COMMUNAL
SPACE
1/32" = 1'-0"